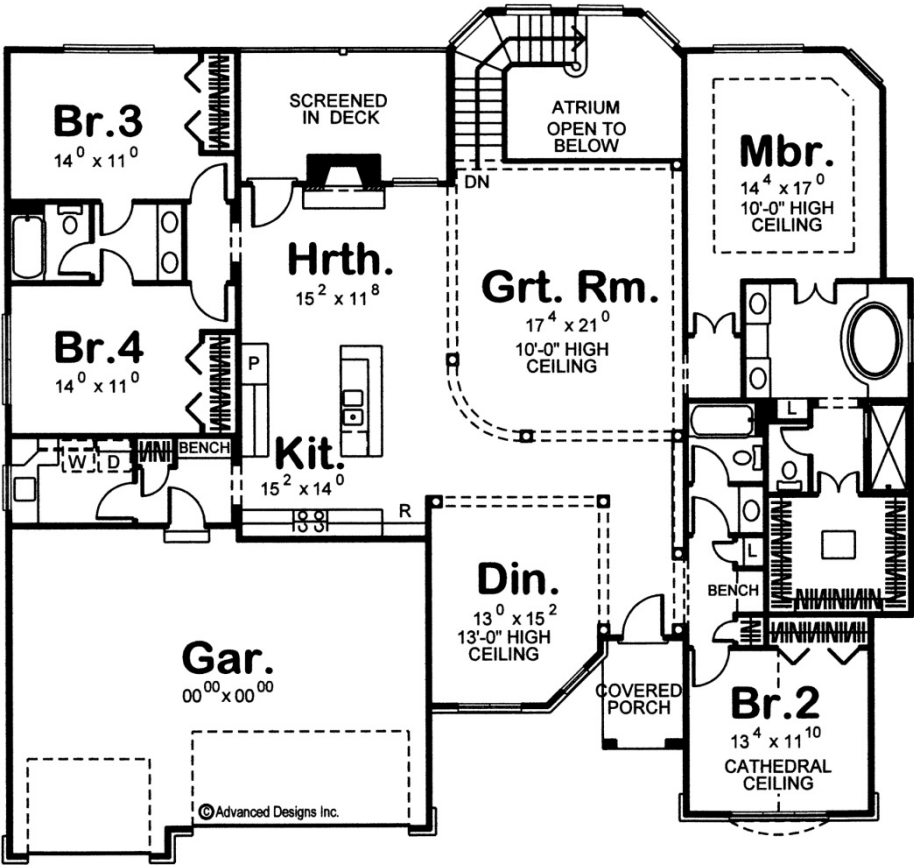




29163 - Hoffman Data Sheet

2788 SQ FT	4 BEDS	3 BATHS	3 BAYS	67' 0" WIDE	63' 0" DEEP
---------------	-----------	------------	-----------	----------------	----------------



Construction Specs

Layout

Bedrooms

Bathrooms	3
Garage Bays	3
Square Footage	
Main Level	2788 Sq. Ft.
Garage	705 Sq. Ft.
Total Finished Area	2788 Sq. Ft.
Exterior Dimensions	
Width	67' 0"
Depth	63' 0"
Ridge Height <i>Calculated from main floor line</i>	26'
Default Construction Stats <i>Stats are unique to the individual plan.</i>	
Foundation Type	Basement
Exterior Wall Construction	2x4
Roof Pitches	8/12 Primary, 12/12 Secondary
Foundation Wall Height	9'
Main Wall Height	9'

Plan Description

Beautifully crafted design details lend an air of European elegance to this 4-bedroom, 1-story house plan. Upon entering the home, guests are greeted by an open living space that exudes sophistication and style. The boundaries of the formal dining room (with 13-foot-high ceiling) and the great room (with 10-foot-high ceiling), are defined by ceiling heights and tasteful columns. A hearth room extends this open space and accesses a rear screened-in deck. Just off the great room, a stairway leads to an open atrium area on the lower level. The kitchen interacts seamlessly with the main living areas and includes an island workspace. Just off the kitchen, a mud room with coat closet and bench accesses both the 3-car garage and the laundry room with counter space and soaking sink. Double doors, secluded within an alcove, reveal a master suite that abounds with luxurious amenities. The bath area features his and her vanities, oval soaking tub, walk-in shower, compartmented toilet and walk-in closet with built-in dresser.

Bedroom 2 resides nearby, but with appropriate separation from the master suite. This bedroom enjoys a high cathedral ceiling and is just steps away from a hall bath. Bedrooms 3 and 4 are located on the opposite side of the home and share a Jack-n-Jill bath.