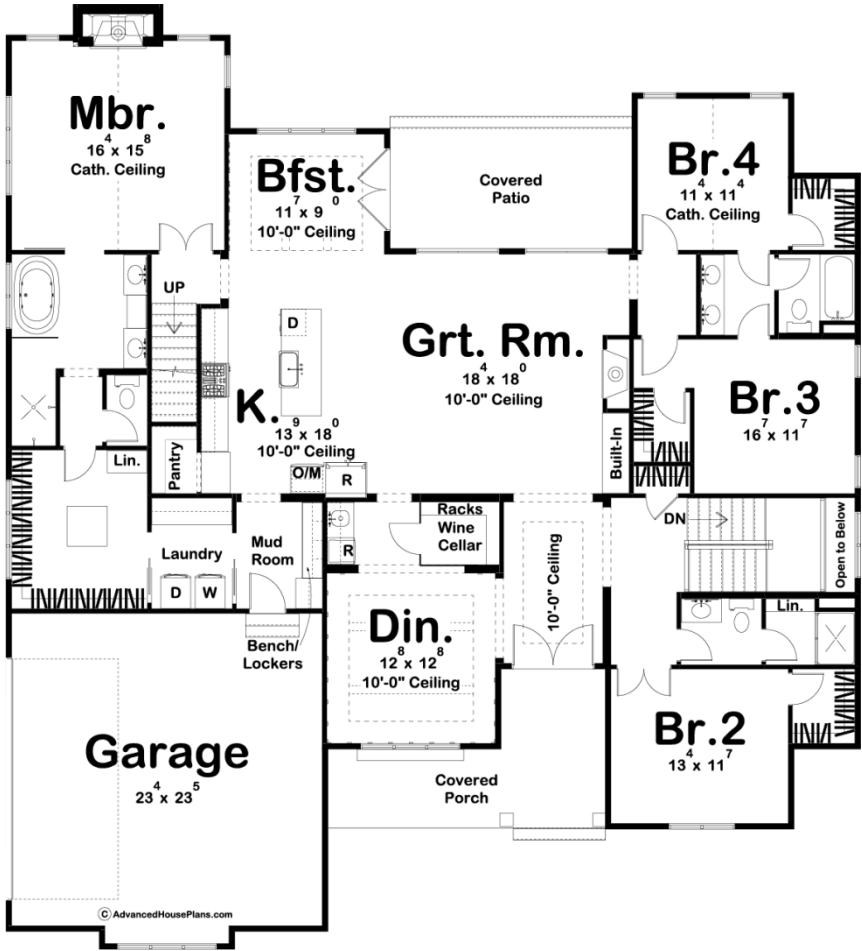
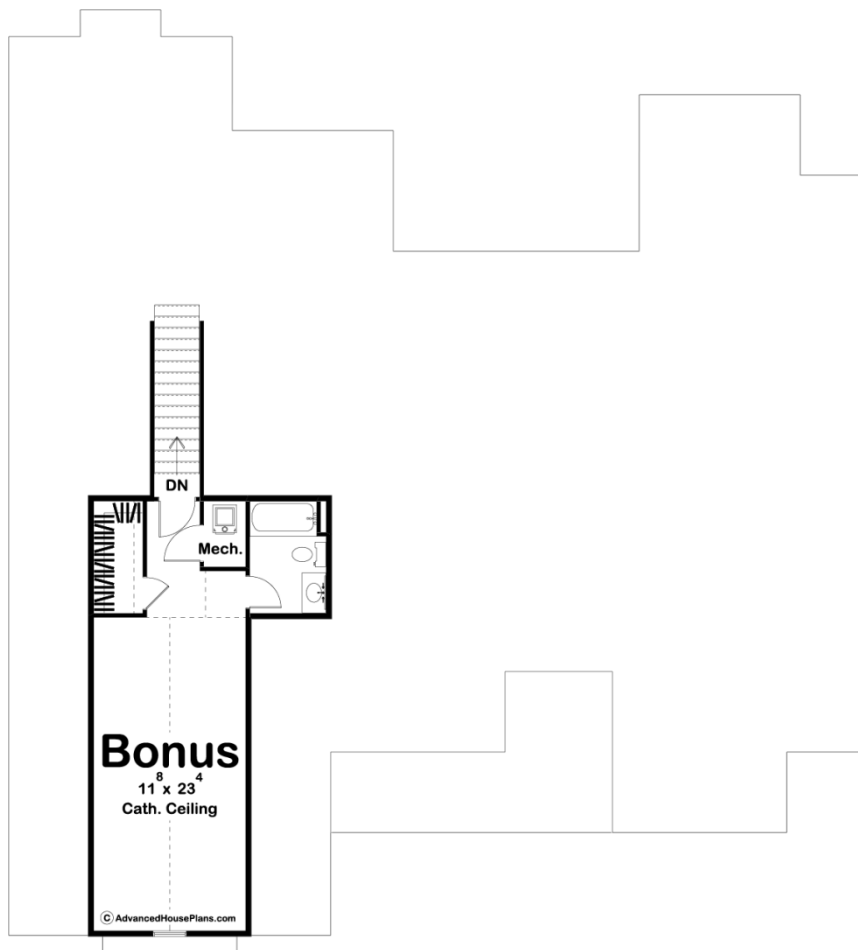




29734 - Hidden Valley Data Sheet

2707 SQ FT	4 BEDS	3 BATHS	2 BAYS	67' 0" WIDE	71' 0" DEEP
---------------	-----------	------------	-----------	----------------	----------------





Construction Specs

Layout

Bedrooms	4
Bathrooms	3
Garage Bays	2

Square Footage

Main Level	2707 Sq. Ft.
Total Finished Area	2707 Sq. Ft.

Exterior Dimensions

Width	67' 0"
Depth	71' 0"

Default Construction Stats

Stats are unique to the individual plan.

Foundation Type	Basement
Exterior Wall Construction	2x4
Roof Pitches	10/12 Primary, 12/12 6/12 Secondary

Foundation Wall Height	9'
Main Wall Height	9'
Second Wall Height	8'

Plan Description

This beautiful ranch plan exudes the Modern Farmhouse style with a mixture of board and batten siding, metal roof, and a large front covered porch. Immediately on the inside of the house, you'll see the formal dining room that has exposed wood beams. The dining room accesses the great room through a magnificent glass wine cellar. The great room is warmed by a fireplace and includes a built-in bookshelf. The kitchen is well fitted with a large kitchen island and a walk-in pantry. The master suite is separated from the other bedrooms by the main living area. The master suite featured a fireplace, his/her vanities and a large walk-in closet with an island. On the other side of the house, you will find 3 bedrooms. Bedrooms 3 and 4 share a Jack and Jill bathroom while bedroom 2 enjoys its own bathroom. Each bedroom includes a walk-in closet. Upstairs you will find a large bonus room with a bathroom. Optional Bonus room adds 447 sq.ft.