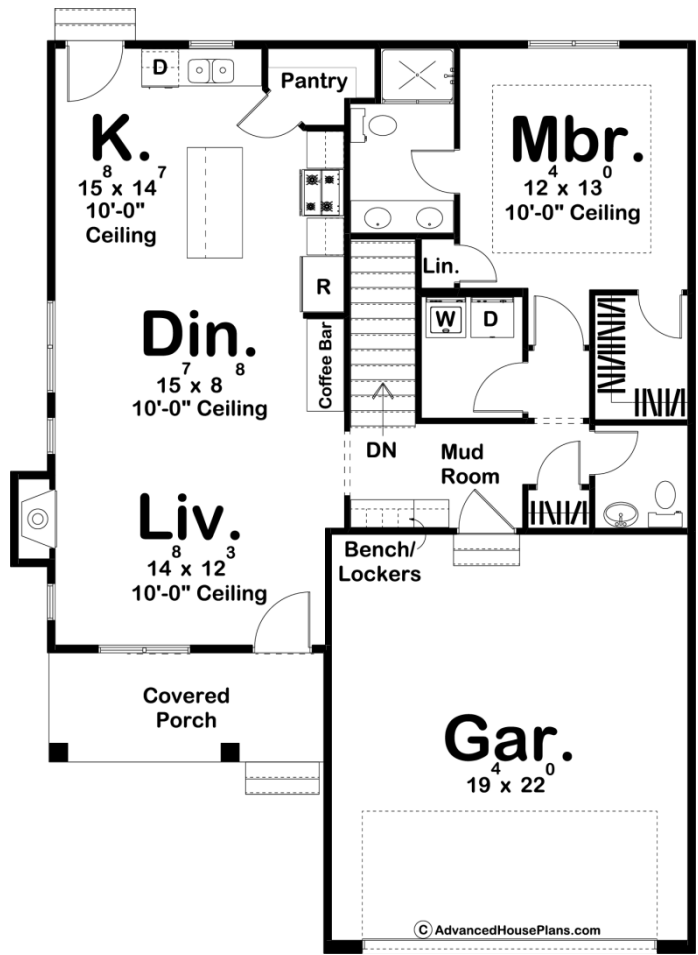
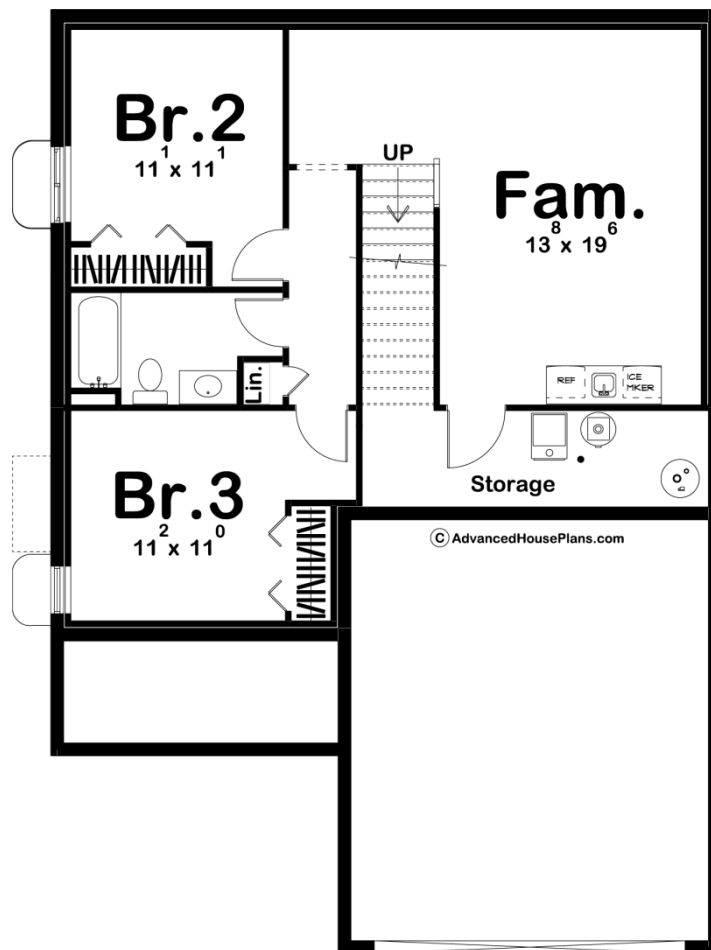




29890 - Hayward Data Sheet

1030 SQ FT	1 BEDS	2 BATHS	2 BAYS	37' 0" WIDE	49' 0" DEEP
---------------	-----------	------------	-----------	----------------	----------------





Construction Specs

Layout

Bedrooms	1
Bathrooms	2
Garage Bays	2

Square Footage

Main Level	1030 Sq. Ft.
Covered Area	90 Sq. Ft.
Garage	445 Sq. Ft.
Total Finished Area	1030 Sq. Ft.

Exterior Dimensions

Width	37' 0"
Depth	49' 0"

Default Construction Stats

Stats are unique to the individual plan.

Foundation Type	Basement
-----------------	----------

Exterior Wall Construction	2x4
Roof Pitches	8/12 Primary 4/12 Secondary
Foundation Wall Height	9'
Main Wall Height	9'

Plan Description

The Hayward plan is a beautiful yet simple Modern Farmhouse style Ranch plan. The exterior of the house features highlights of board and batten siding, wood garage doors and black contrasting soffit and fascia. A pair of dormers are situated over the front covered porch. Just inside the house, the living room, dining room and kitchen flow seamlessly in an open concept layout. The living room is warmed by a fireplace and allows in plenty of natural light through an abundance of windows. The dining room features an amazing built-in coffee bar. The kitchen feels large for such a small house. The kitchen features a large island with a snack bar and a large walk-in pantry. The master bedroom lies under a trayed ceiling and features a bathroom with his/her vanities and a walk-in shower. An optional finished basement adds an additional 815 sq ft and features an additional family room with a wet bar and 2 additional bedrooms.