

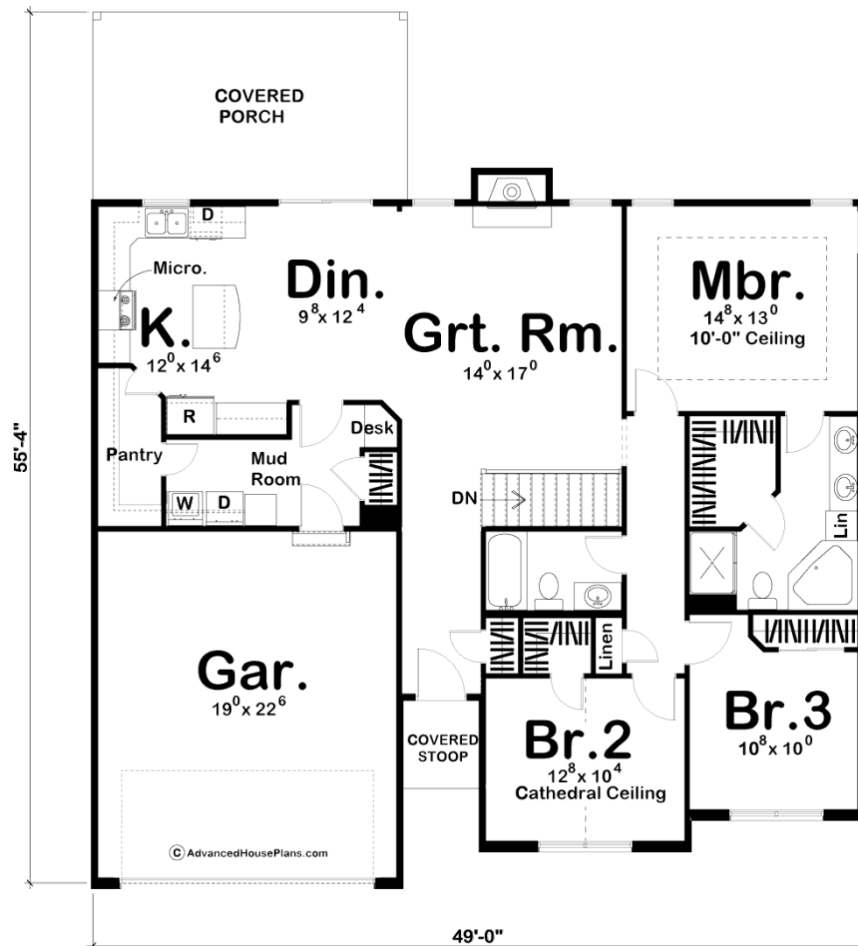
ADVANCED

HOUSE PLANS



29277 - Hadley Data Sheet

1550 SQ FT	3 BEDS	2 BATHS	2 BAYS	49' 0" WIDE	56' 0" DEEP
---------------	-----------	------------	-----------	----------------	----------------



Construction Specs

Layout

Bedrooms

Bathrooms	2
Garage Bays	2
Square Footage	
Main Level	1550 Sq. Ft.
Garage	448 Sq. Ft.
Total Finished Area	1550 Sq. Ft.
Exterior Dimensions	
Width	49' 0"
Depth	56' 0"
Ridge Height <i>Calculated from main floor line</i>	22'
Default Construction Stats <i>Stats are unique to the individual plan.</i>	
Foundation Type	Basement
Exterior Wall Construction	2x4
Roof Pitches	6/12 F-F 8/12 S-S
Foundation Wall Height	9'
Main Wall Height	9'

Plan Description

A trio of gables set an attractive tone on the front of this compact, traditional-style, 1-story house plan. Inside from the covered stoop, an entry hall leads directly to the great room, where a fireplace warms the atmosphere between two sunny windows. An open arrangement of the great room, dining area, and kitchen, along with access to a rear covered porch, enhances entertaining options. The kitchen boasts plenty of counter space, plus an island workspace with a breakfast bar and a walk-in pantry. Just off the kitchen, a utility area that accesses the 2-car garage includes a laundry area and mud room with built-in desk and coat closet. Sleeping quarters reside on the other side of the home. The master suite showcases a 10-foot-high boxed ceiling. It's bath area includes a corner soaking tub, shower and walk-in closet.

Bedroom 2 has a cathedral ceiling and walk-in closet. Both secondary bedrooms are brightened by large windows to the front and share a central hall bath. Check out our other small house plans! As always any Advanced House Plans home plan can be customized to fit your needs with our alteration department. Whether you need to add another garage stall, change the front elevation, stretch the home larger or just make the home plan more affordable for your budget we can do that and more for you at Ahp.