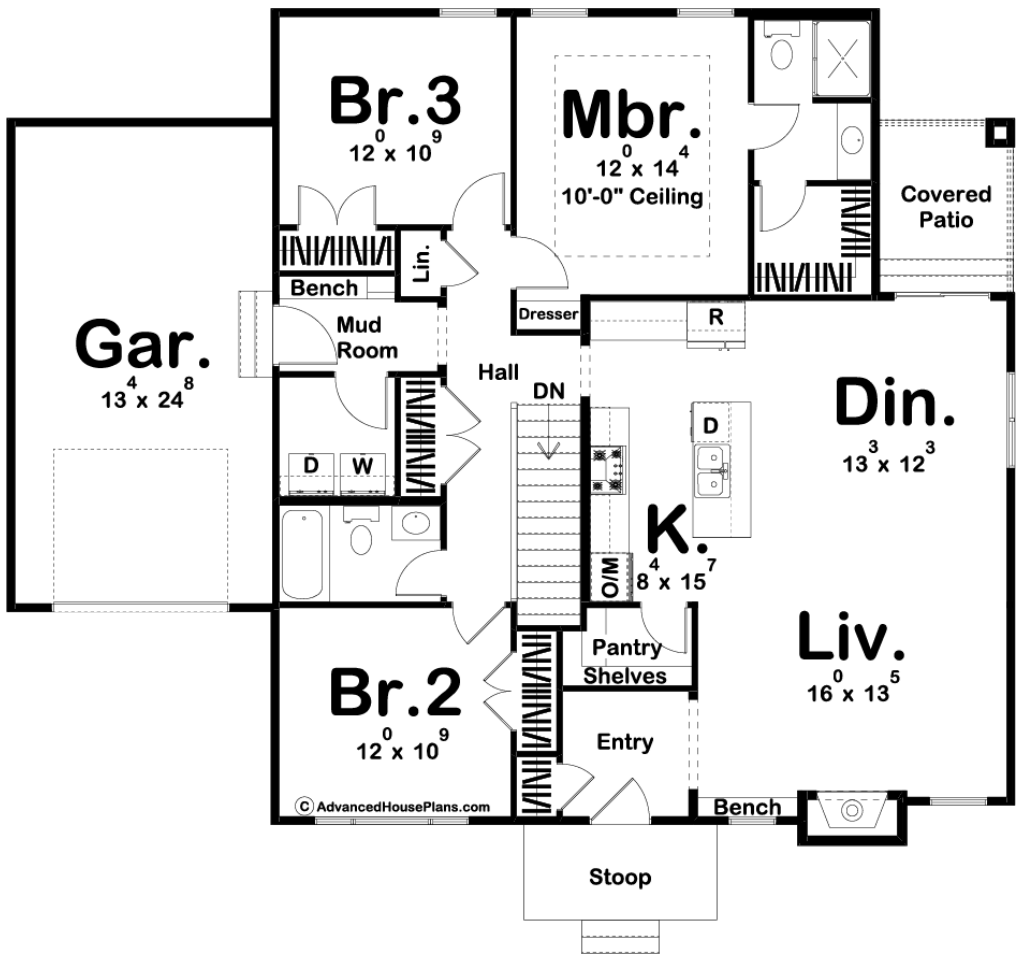




29761 - Fontenelle Data Sheet

1496 SQ FT	3 BEDS	2 BATHS	1 BAYS	52' 0" WIDE	43' 0" DEEP
---------------	-----------	------------	-----------	----------------	----------------



Construction Specs

Layout

Bedrooms

Bathrooms	2
Garage Bays	1
Square Footage	
Main Level	1496 Sq. Ft.
Garage	350 Sq. Ft.
Total Finished Area	1496 Sq. Ft.
Exterior Dimensions	
Width	52' 0"
Depth	43' 0"
Default Construction Stats	
<i>Stats are unique to the individual plan.</i>	
Foundation Type	Basement
Exterior Wall Construction	2x4
Roof Pitches	10/12 Primary, 16/12 Secondary
Foundation Wall Height	9'
Main Wall Height	9'

Plan Description

If you love old world charm, you'll love our Fontenelle plan. The exterior of this home exudes the classic charm of a cottage style plan, but don't let that fool you, this plan packs plenty of modern amenities. As you step into the home you will find yourself in a convenient entryway that includes a coat closet. The living room is warmed by a fireplace that has a perfect built-in bench next to it. The kitchen and dining room flow seamlessly with the living room to give this efficient house an open feel. The kitchen is amazing for a home this size and includes a large kitchen island with a snack bar and a walk-in pantry. The master suite includes its own bathroom and walk-in closet and you'll find a tray ceiling in the bedroom to make the room feel larger. The master bedroom also includes a built-in dresser that's a real space saver. Bedrooms 2 and 3 share a conveniently located hall bathroom. The home's 1 car garage accesses the home through a convenient mudroom that includes a practical bench. If you are looking for other wonderful plans that are efficient to build, check out our other small house plans.