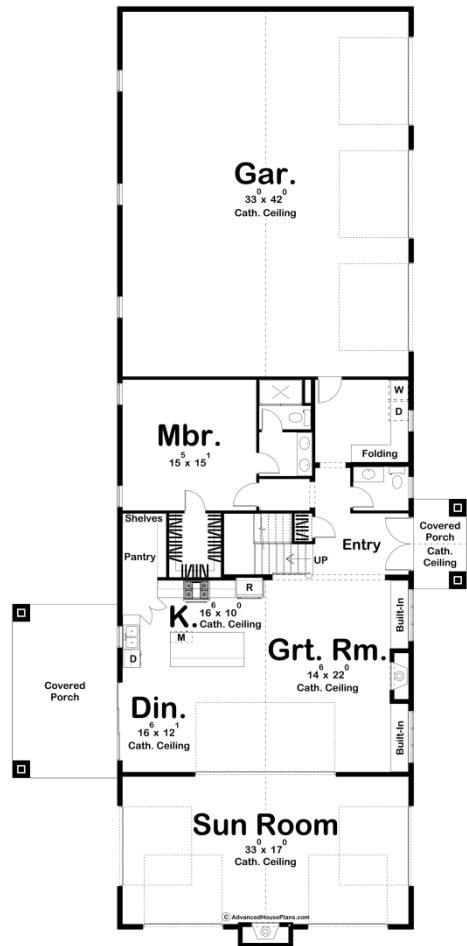
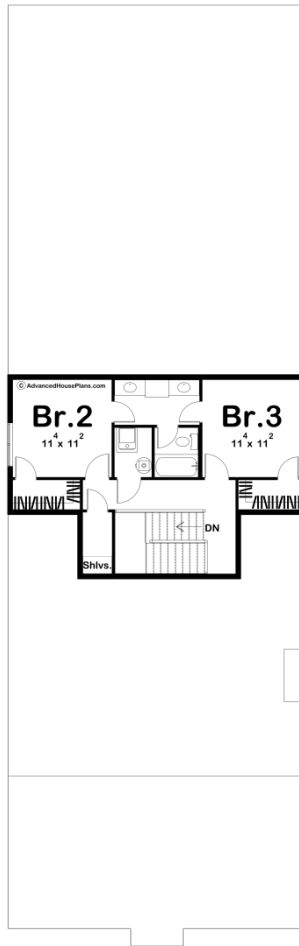




30120 - Elkhorn Valley Data Sheet

2155 SQ FT	3 BEDS	3 BATHS	3 BAYS	52' 0" WIDE	108' 0" DEEP
---------------	-----------	------------	-----------	----------------	-----------------





Construction Specs

Layout	
Bedrooms	3
Bathrooms	3
Garage Bays	3
Square Footage	
Main Level	1552 Sq. Ft.
Second Level	603 Sq. Ft.
Covered Area	875 Sq. Ft.
Garage	1445 Sq. Ft.
Total Finished Area	2155 Sq. Ft.
Exterior Dimensions	
Width	52' 0"
Depth	108' 0"
Default Construction Stats	
Stats are unique to the individual plan.	

Foundation Type	Slab
Exterior Wall Construction	2x6
Roof Pitches	6/12 Primary, 12/12 Secondary
Main Wall Height	10'
Second Wall Height	8'

Plan Description

If you are looking for that perfect rustic Barndominium plan, you've found it in the Elkhorn Valley plan. The exterior showcases a simple roofline, wood siding, and garage doors everywhere to open this beautiful home up. A massive sun room with a fireplace has 4 overhead doors to open the room to nature. Another overhead door opens the sun room into the main living area. The great room, kitchen, and dining room flow seamlessly in an open layout. The great room is warmed by a fireplace that is flanked by built-in bookshelves. The kitchen includes a large island and a massive walk-in pantry. Tucked behind the kitchen, you'll find the master suite. The master bath includes his/her vanities and an enclosed toilet area. The oversized laundry room is located on the main floor and includes a large folding counter. The second floor includes 2 bedrooms that share a jack and jill bathroom. Back on the main level, the home features a massive 3 car garage.