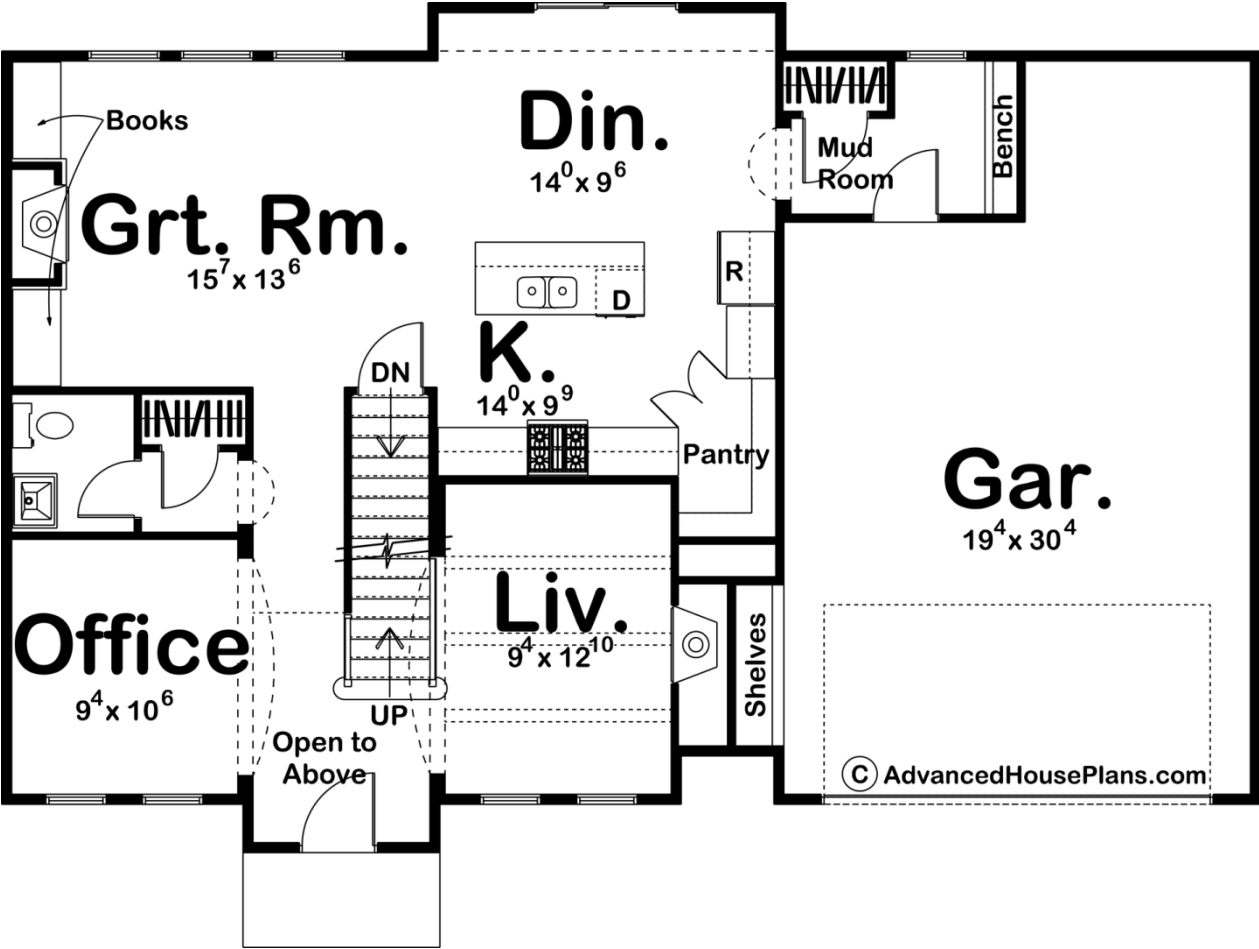


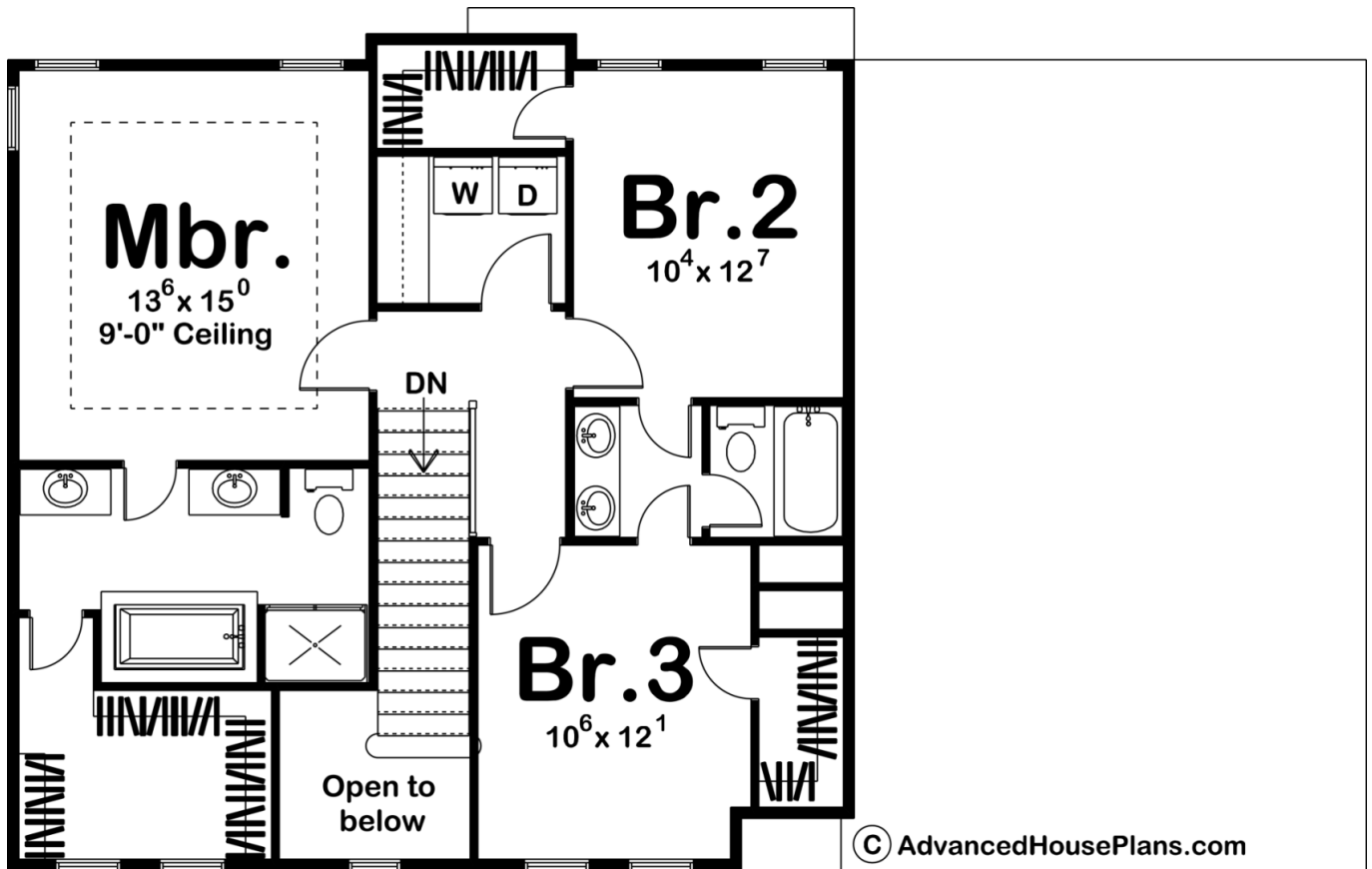


© WWW.ADVANCEDHOUSEPLANS.COM

## 29315 - Duncan Data Sheet

1998 SQ FT	3 BEDS	3 BATHS	2 BAYS	52' 0" WIDE	39' 0" DEEP
---------------	-----------	------------	-----------	----------------	----------------





## Construction Specs

### Layout

Bedrooms	3
Bathrooms	3
Garage Bays	2

### Square Footage

Main Level	1084 Sq. Ft.
Second Level	914 Sq. Ft.
Garage	554 Sq. Ft.
Total Finished Area	1998 Sq. Ft.

### Exterior Dimensions

Width	52' 0"
Depth	39' 0"
Ridge Height	33'
<i>Calculated from main floor line</i>	

**Default Construction Stats**  
*Stats are unique to the individual plan.*

Foundation Type	Basement
Exterior Wall Construction	2x4
Roof Pitches	Primary 8/12, Secondary 10/12
Foundation Wall Height	9'
Main Wall Height	9'
Second Wall Height	8'

**Plan Description**

Classic Colonial styling and a cost-effective "footprint" makes this 2-story house plan an ideal choice for any neighborhood. Entrance through the gabled front stoop reveals immediate views of the office area and formal living room with fireplace. A greater degree of privacy is enjoyed toward the rear of the home where the great room, dining area and kitchen share open space. The great room is warmed by a fireplace and brightened by a bank of windows to the rear. The kitchen features a work island with breakfast bar and a walk-in pantry. Just off the dining area, a mud room with coat closet and bench intercepts traffic from the 2-car garage, which features additional space for storage or possibly a work area. On the second level, the master suite features his and her vanities, soaking tub, shower and a walk-in closet. Bedrooms 2 and 3 each have walk-in closets and share a Jack-n-Jill bath. A centrally located laundry with folding counter conveniently serves all bedrooms.