



## 29159 - Collamore Data Sheet

3992  
SQ FT

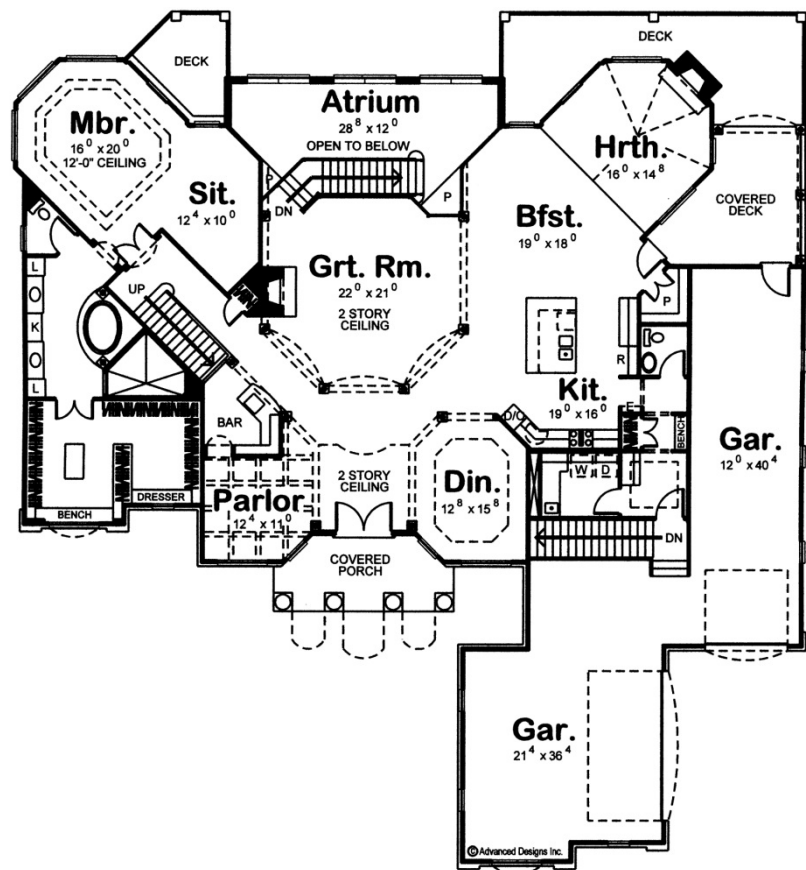
3  
BEDS

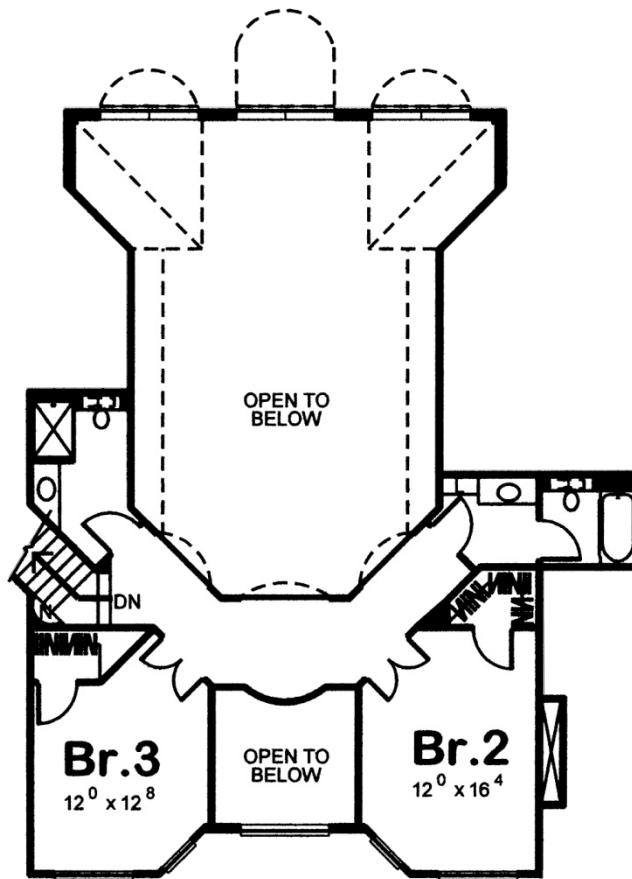
4  
BATHS

3  
BAYS

85' 0"  
WIDE

86' 0"  
DEEP





## Construction Specs

### Layout

|             |   |
|-------------|---|
| Bedrooms    | 3 |
| Bathrooms   | 4 |
| Garage Bays | 3 |

### Square Footage

|                     |              |
|---------------------|--------------|
| Main Level          | 3245 Sq. Ft. |
| Second Level        | 747 Sq. Ft.  |
| Garage              | 1216 Sq. Ft. |
| Total Finished Area | 3992 Sq. Ft. |

### Exterior Dimensions

|  |        |
|--|--------|
| Width                                  | 85' 0" |
| Depth                                  | 86' 0" |
| Ridge Height                           | 31'    |
| <i>Calculated from main floor line</i> |        |

**Default Construction Stats**  
*Stats are unique to the individual plan.*

|                            |          |
|----------------------------|----------|
| Foundation Type            | Basement |
| Exterior Wall Construction | 2x4      |
| Roof Pitches               | 8/12     |
| Foundation Wall Height     | 9'       |
| Main Wall Height           | 10'      |
| Second Wall Height         | 8'       |

**Plan Description**

Soaring columns, accented by elegant arches, create a stunning centerpiece for the front of this grand 1-1/2 story house plan. Designed for unforgettable entertaining, the interior aspects are impressive, as guests are greeted with immediate views of a 2-story-high great room, set within an array of arched openings. To the rear of the great room, a 3-story-high atrium is brightened by a soaring wall of windows. The 2-story-high entry hall is flanked by a formal dining room and a parlor with adjacent bar. To the side of the great room, the breakfast area, kitchen, and bayed hearth room interact openly. This area accesses a rear deck that is partially covered to facilitate outdoor dining, rain or shine. The kitchen offers plenty of counter space in addition to an island workspace/breakfast bar and a walk-in pantry. Just off the kitchen, a utility area includes a sizeable laundry room with counter and soaking sink, a powder bath and a coat closet with adjacent bench. This area accesses the 4-car garage area, which features one 2-car, side-by-side garage, and one 2-car tandem garage. The tandem garage accesses the rear covered deck and a secondary set of stairs leads from the garage area to the basement. On the opposite side of the home, the master suite lies quietly behind a set of double doors. The bedroom, with a 12-foot-high ceiling, includes a large sitting area and access to a private deck. The bath area abounds in luxurious amenities, which include his and her vanities, an opulent oval soaking tub, spacious walk-in shower, compartmented toilet and an expansive walk-in closet with built-in dresser and bench. On the second level, bedrooms 2 and 3 each have walk-in closets and enjoy their own baths. Arched openings provide breathtaking views to the entry hall and great room below.