

# ADVANCED

HOUSE PLANS



## 29084 - Castleberry Data Sheet

2200  
SQ FT

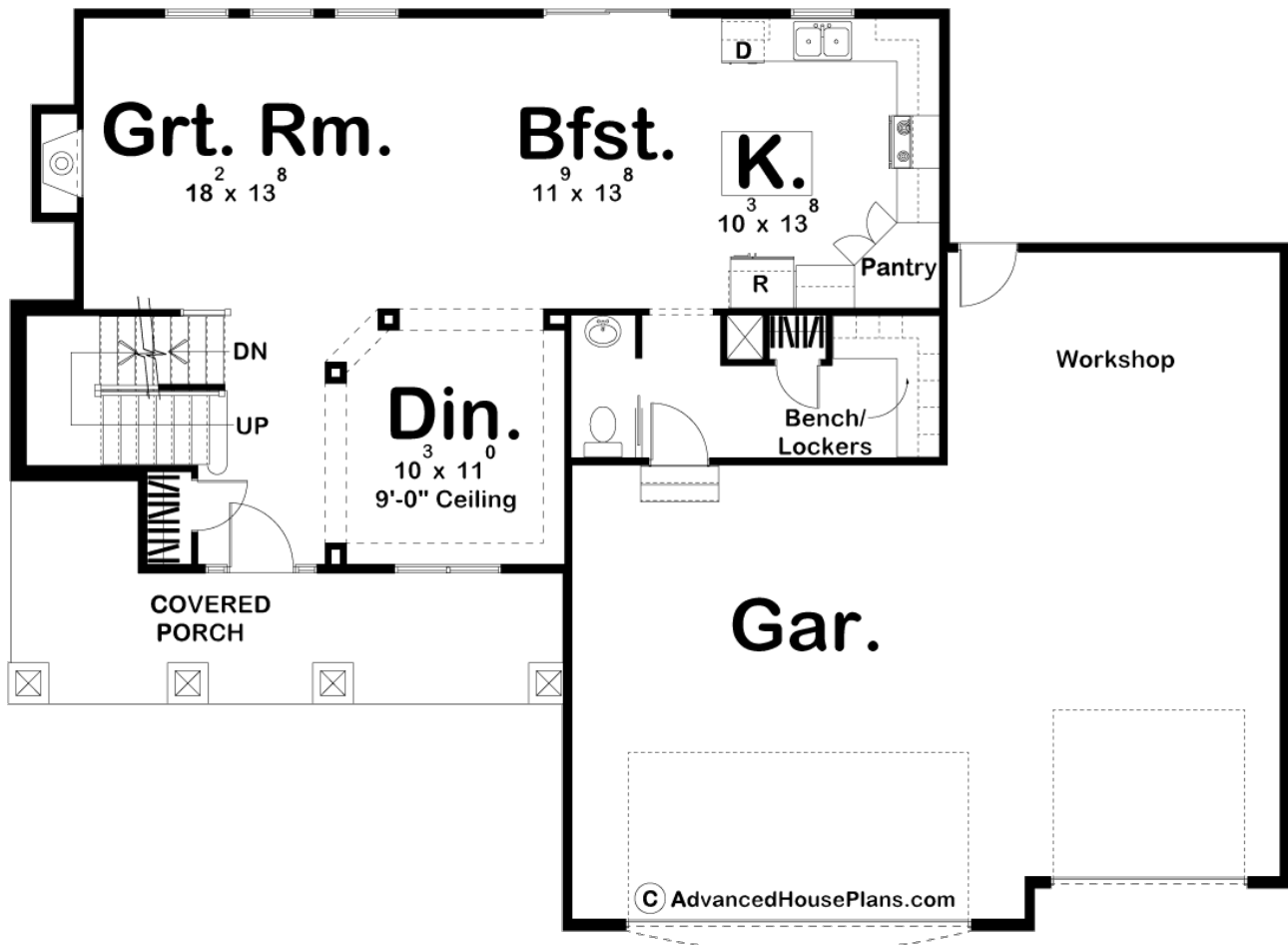
4  
BEDS

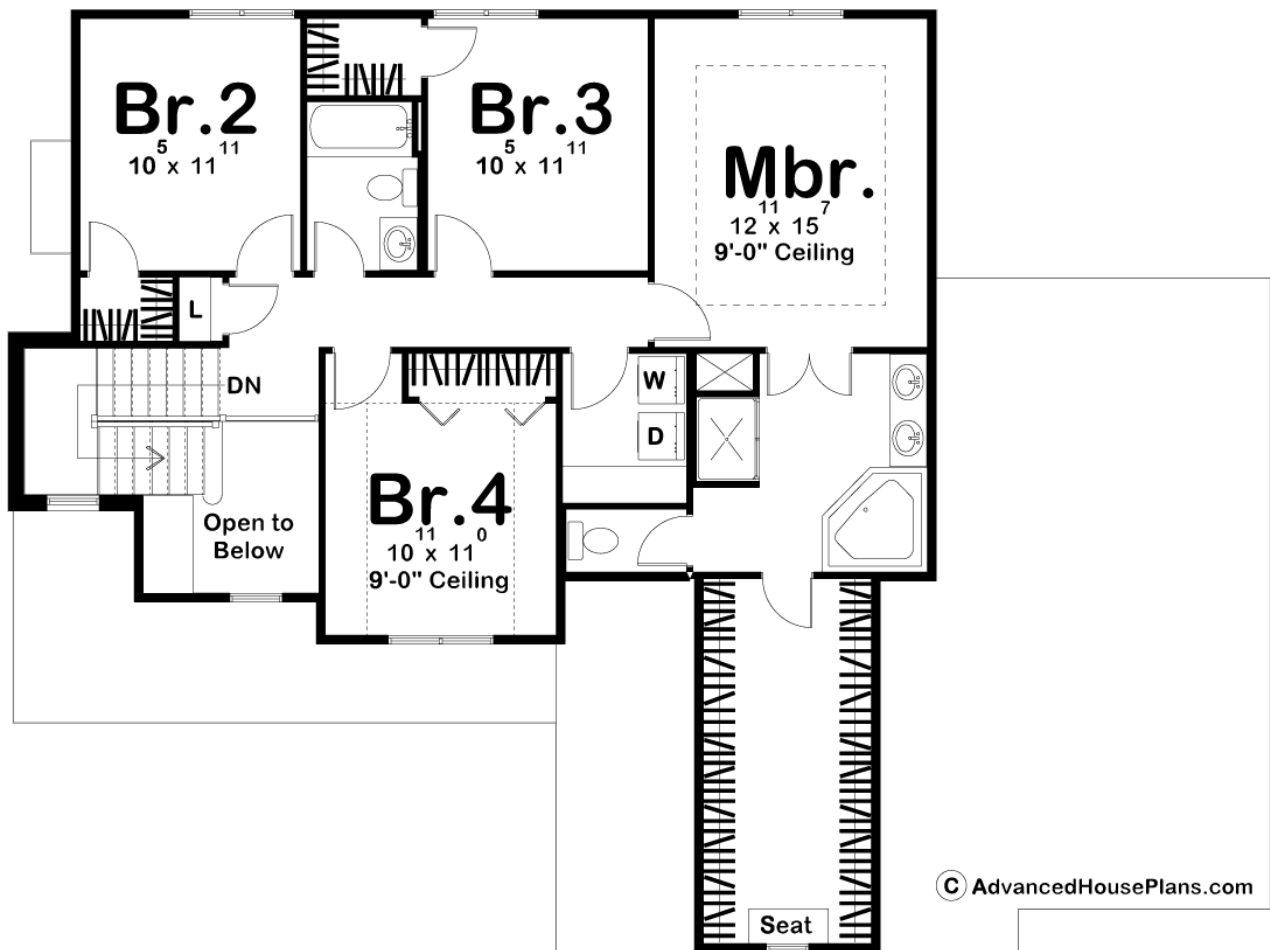
3  
BATHS

3  
BAYS

60' 0"  
WIDE

43' 0"  
DEEP





## Construction Specs

### Layout

Bedrooms	4
Bathrooms	3
Garage Bays	3

### Square Footage

Main Level	1003 Sq. Ft.
Second Level	1197 Sq. Ft.
Garage	876 Sq. Ft.
Total Finished Area	2200 Sq. Ft.

### Exterior Dimensions

Width	60' 0"
Depth	43' 0"
Ridge Height	29'
<i>Calculated from main floor line</i>	

**Default Construction Stats**  
*Stats are unique to the individual plan.*

Foundation Type	Basement
Exterior Wall Construction	2x4
Roof Pitches	Primary 7/12, Secondary 12/12
Foundation Wall Height	9'
Main Wall Height	9'
Second Wall Height	8'

**Plan Description**

A quartet of solid columns highlights the covered front porch of this traditional style, 2-story house plan. Just inside, a formal dining area is defined by elegant columns and ceiling details. Beyond, the great room, with its fireplace and views to the rear, opens to the breakfast area and kitchen. The kitchen itself features a central work island, walk-in pantry, and ample counter space. A mudroom with bench, lockers, coat closet, and powder bath, intercepts traffic from the 3-car garage, which boasts extra space, ideal for a workshop. Upstairs, the master suite includes a bath area with corner tub, shower, compartmented toilet, and an expansive walk-in closet. Bedrooms 2, 3 and 4 share a central hall bath. A banister at the top of the stairs offers views to the entry area below.