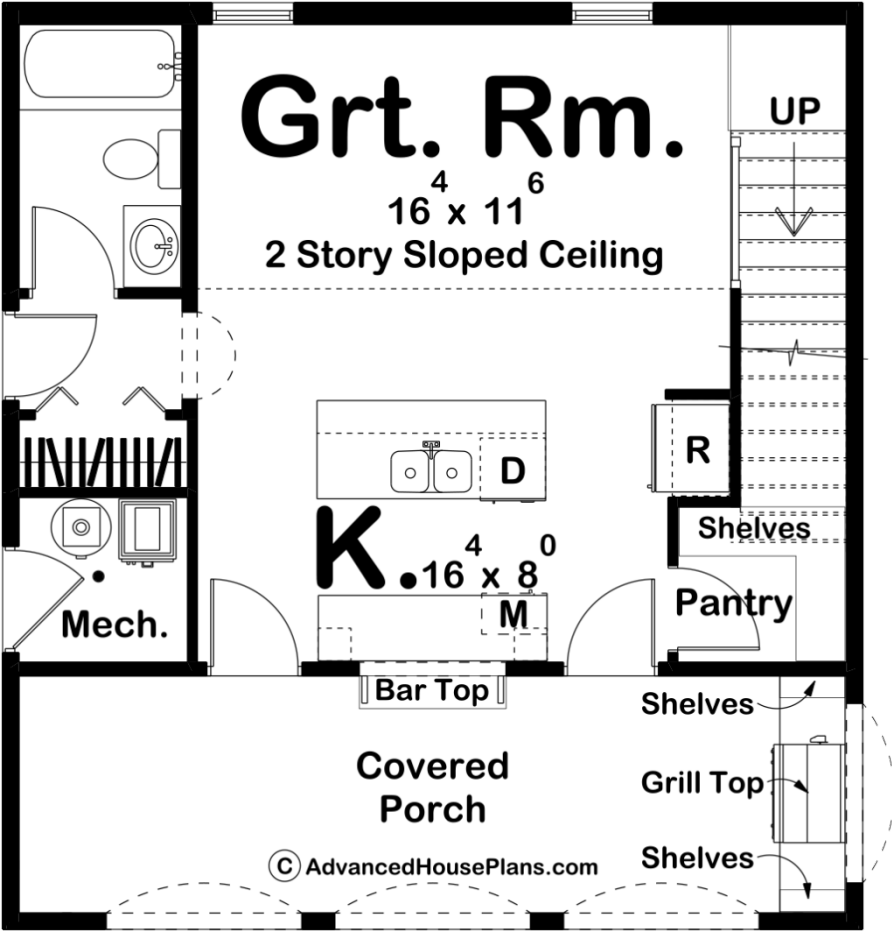
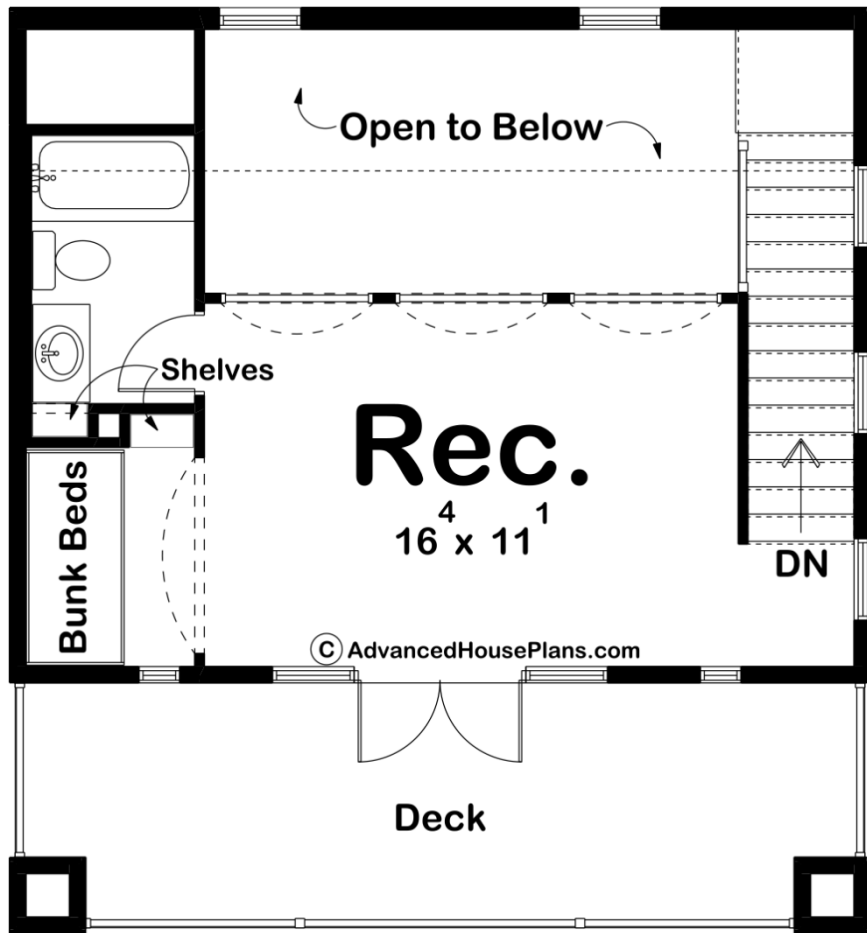




30234 - Calypso Bay Data Sheet

803 SQ FT	0 BEDS	2 BATHS	0 BAYS	26' 0" WIDE	28' 0" DEEP
--------------	-----------	------------	-----------	----------------	----------------





## Construction Specs

### Layout

Bathrooms	2
-----------	---

### Square Footage

Main Level	496 Sq. Ft.
Second Level	307 Sq. Ft.
Covered Area	199 Sq. Ft.
Total Finished Area	803 Sq. Ft.

### Exterior Dimensions

Width	26' 0"
Depth	28' 0"

### Default Construction Stats

*Stats are unique to the individual plan.*

Foundation Type	Slab
Exterior Wall Construction	2x4
Roof Pitches	12/12 Primary

Main Wall Height	9'
Second Wall Height	8'

## Plan Description

This modern cottage style pool house is an architectural gem that seamlessly combines style and functionality. With 803 square feet of space, this pool house features clean lines and a contemporary design that is both inviting and sophisticated. The open floor plan offers a spacious and bright living area, complete with large windows that allow natural light to flood the space. The living area is further enhanced by high ceilings, as well as direct access to the kitchen, with a walk-in pantry and bar top, perfect for hosting pool parties, barbecues and casual family gatherings. The pool house has a large covered patio that leads to the pool area, providing ample space for outdoor dining and lounging. The patio is equipped with a grill top and shelving, with plenty of space for comfortable seating, making it a perfect spot to enjoy the beautiful weather and the great company. Upstairs, the plan has a large rec area and bunk beds, making it a great space for sleepovers or just extra family time in an additional space. This plan is complete with two bathrooms, one upstairs and one downstairs, and an upstairs deck to watch the sunset after a long day of hanging out by the pool.