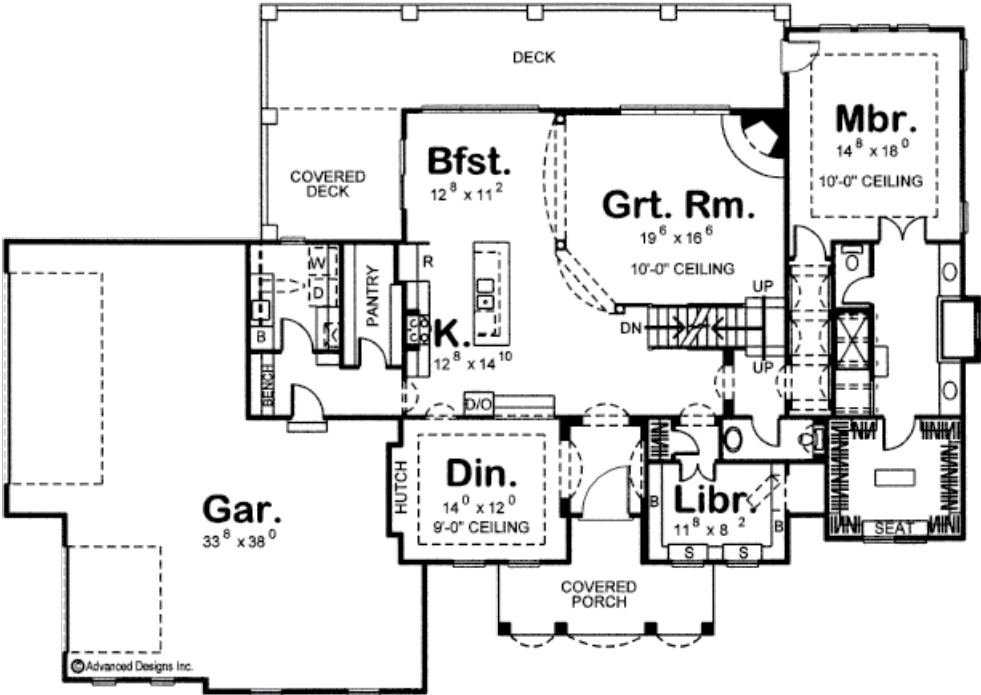
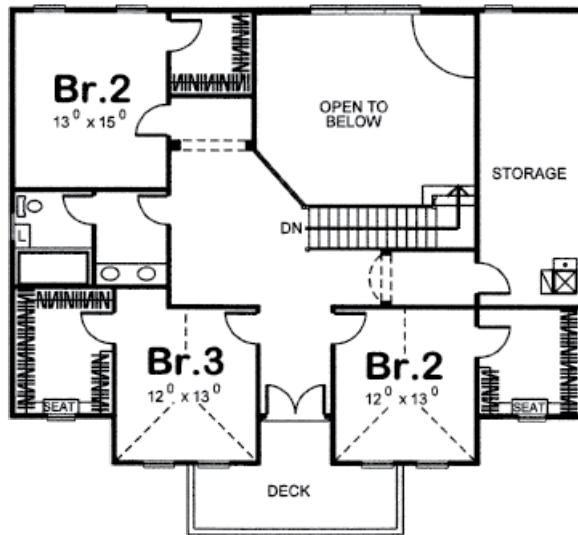




29133 - Acevedo Data Sheet

3365 SQ FT	3 BEDS	4 BATHS	3 BAYS	59' 0" WIDE	83' 0" DEEP
---------------	-----------	------------	-----------	----------------	----------------





## Construction Specs

### Layout

Bedrooms	3
Bathrooms	4
Garage Bays	3

### Square Footage

Main Level	2139 Sq. Ft.
Second Level	1226 Sq. Ft.
Garage	996 Sq. Ft.
Total Finished Area	3365 Sq. Ft.

### Exterior Dimensions

Width	59' 0"
Depth	83' 0"
Ridge Height	29'
<i>Calculated from main floor line</i>	

**Default Construction Stats**  
*Stats are unique to the individual plan.*

Foundation Type	Basement
Exterior Wall Construction	2x4
Roof Pitches	6/12
Foundation Wall Height	9'
Main Wall Height	9'
Second Wall Height	9'

**Plan Description**

A striking front porch, lined with columns and topped by a balconied deck, serves as a beautiful centerpiece to this marvelous Mediterranean-style, 1-1/2 story house plan. Just inside, the entry hall is flanked by a library and formal dining room with built-in hutch. The library features built-in bookcases -- one of which that cleverly swings open to reveal a "secret" space. Further inside the kitchen, breakfast area and great room interact openly. The great room features a soaring 2-story-high ceiling and corner fireplace. Its border is defined by elegant columns and arches. The breakfast area accesses a covered deck and has open views to an uncovered deck that sprawls across the rear of the home. The kitchen offers a breakfast island workspace and a sizeable walk-in pantry. Just beyond the pantry lies a utility area, featuring a laundry room and mud room that accesses the home's 3-car garage. On the opposite side of the home, a series of decorative arches lead the way to the master suite. The master bedroom, with a 10-foot-high ceiling, is brightly lit with natural light and accesses the rear deck. The luxurious bath area features his and her vanities that flank a soaking tub, walk-in shower, compartmented toilet and large walk-in closet with built-in dressing seat. Upstairs, a central landing opens to an upper-level front deck. Each of the three secondary bedrooms features walk-in closets and share a centrally located bath. An alcove just off the landing leads to a generous storage area with three windows.