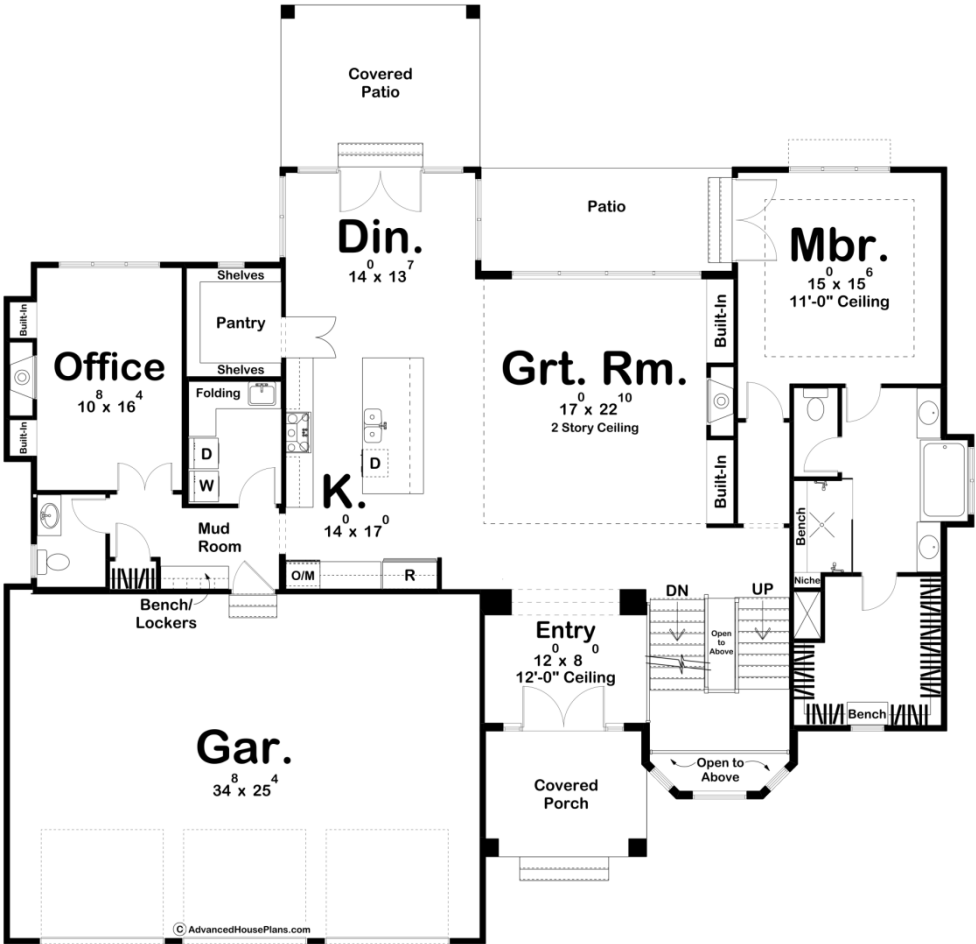
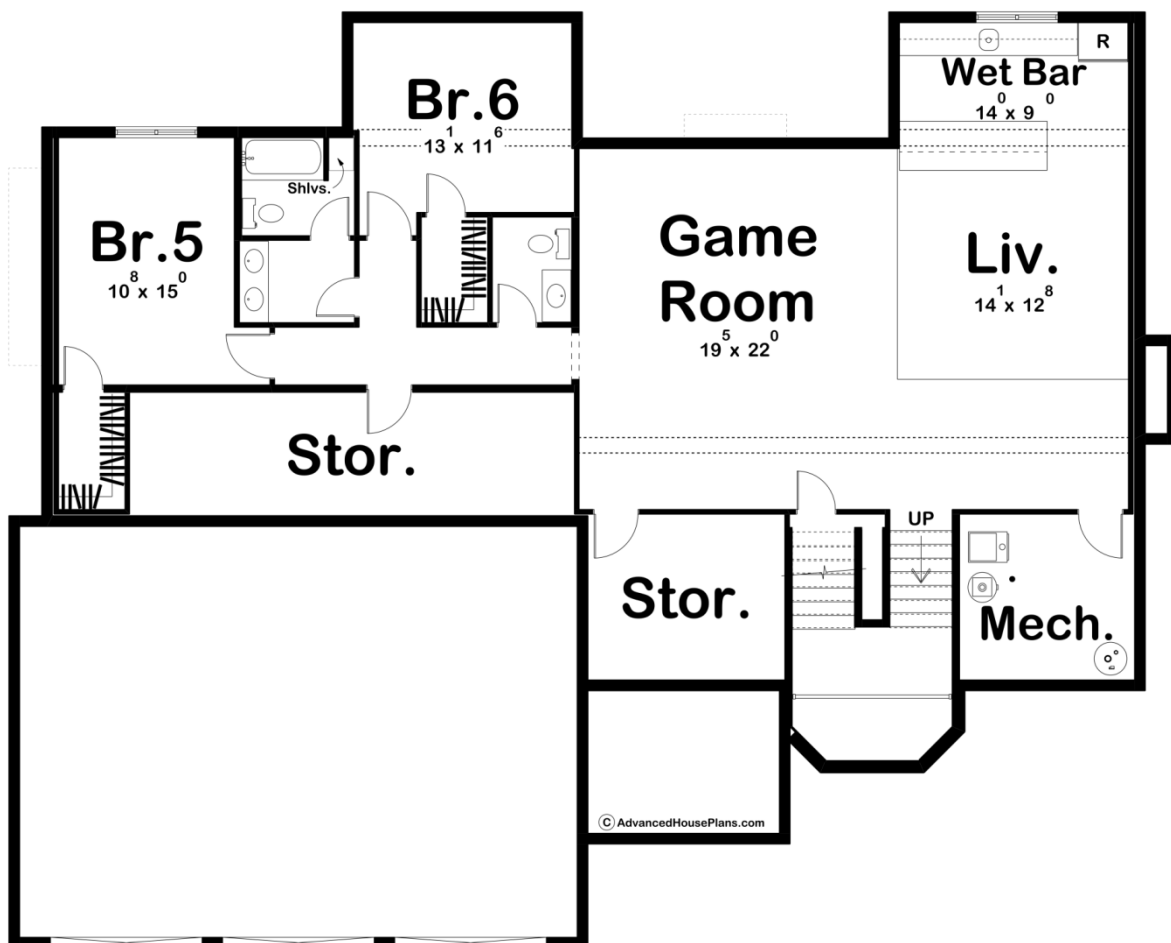
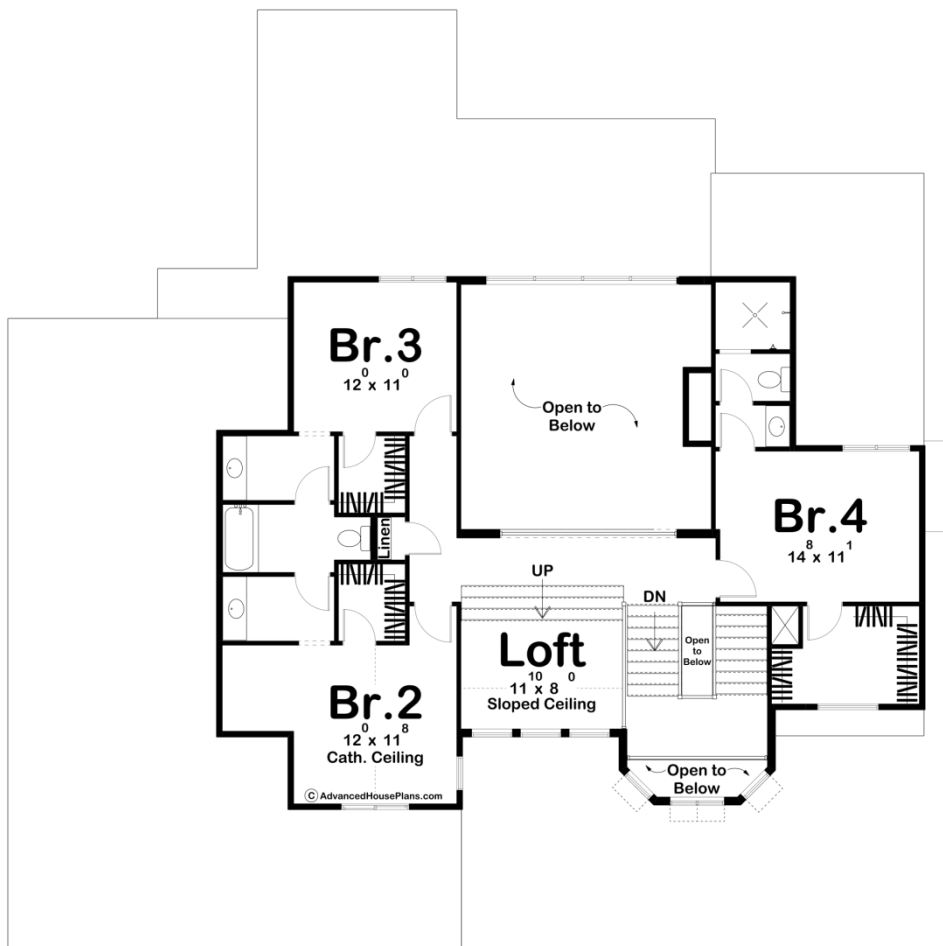




30100 - Griffith Creek Data Sheet

3370 SQ FT	4 BEDS	4 BATHS	3 BAYS	71' 4" WIDE	69' 0" DEEP
---------------	-----------	------------	-----------	----------------	----------------





Construction Specs

Layout	
Bedrooms	4
Bathrooms	4
Garage Bays	3
Square Footage	
Main Level	2230 Sq. Ft.
Second Level	1140 Sq. Ft.
Garage	908 Sq. Ft.
Total Finished Area	3370 Sq. Ft.
Exterior Dimensions	
Width	71' 4"
Depth	69' 0"
Default Construction Stats	
<i>Stats are unique to the individual plan.</i>	
Foundation Type	Basement
Exterior Wall Construction	2x4
Roof Pitches	8/12 Primary, 4/12 Secondary
Foundation Wall Height	9'
Main Wall Height	10'
Second Wall Height	8'

## Plan Description

Shake siding with European accents give this family-friendly 1.5-story house plan a beautiful modern cottage look. Grand impressions are made on the inside, beneath the great room's 2-story-high ceiling. The great room, with views to the rear through a covered patio, is warmed by a beautiful fireplace that is flanked by built-in bookshelves. The kitchen, open to the dining area, boasts generous counter space, a work island, and walk-in pantry. The home's 3-car garage is accessed from the kitchen through a mudroom/utility area, complete with laundry, powder bath, and bench/lockers. A home office is tucked away on the left side of the home. The master suite rests quietly away from the hustle and bustle of the main-floor living areas. Its bath is well appointed with his and her vanities, compartmented toilet, spacious shower and roomy walk-in closet with built-in dressing seat. Upstairs, the three secondary bedrooms enjoy their own privacy. Bedrooms 3 and 4 each include a walk-in closet. Bedrooms 2 and 3 share a Jack-n- Jill bath with compartmented toilet and tub. Bedroom 4 benefits from access to its own bath. Additional intriguing points of this house plan include views from the second-story loft to the great room, as well as open views above and below from the U-shaped stairway. An optional finished basement adds 1526 sq ft to the house and includes 2 additional bedrooms, a wet bar, a game room, a living room, and ample storage.